

Type L-G-K 2 in 1

The special feature on the L-G-K are its claws that enable the user to attach the tool to a foam wall. A comfortable and - as with all other models - clean working is guaranteed.

This tool performs straight as well as angular cuts.

The transformer is attached to a small base with a hole so it can be hung up as well.

You get two tools in one. The cutting bow can be removed and used for free handed cuts.



SPECIFICATIONS

- ◆ Tape measure on the base
- ◆ Extendable tape measure on cutting side
- ◆ Cutting arm with cutting wire suspension on both sides
- ◆ Security Transformer VDE 0570 with thermal fuse: 40 V – 250 Watt – 6.2 A
- ◆ 4 Claws to attached the tool to a Styrofoam wall
- ◆ Cutting arm removable and foldable (saves space)
- ◆ Use standing up or flat
- ◆ Strong corner connections with braces
- ◆ Ball bearing tracks
- ◆ Anodized aluminum
- ◆ CNC-manufactured water-proof base plate
- ◆ Transport security
- ◆ incl. 3 Replacement cutting wires

TECHNICAL DATA

- ◆ Cutting Height: 240 mm
- ◆ Cutting Width: 1010 mm
- ◆ Cutting speed depending on density of material (40 V transformer): 100 mm (4 inches) in 8-15 seconds

POSSIBLE CUTS



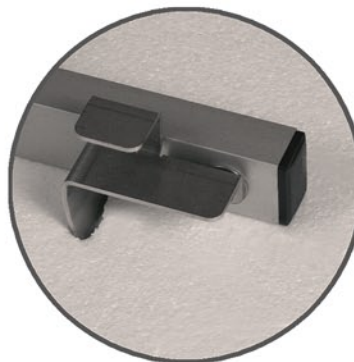
PRICES for Dealers (excluding tax)

- ◆ 789.00 Euro

PRICES for End User (incl. tax)

- ◆ 938.91 Euro

1
Angle cuts can be set up fast and easy.



2
With the use of the claws the tool can be attached to a foam wall.

3
The transformer is attached to a small base with a hole so it can be hung up.



4
Springs on both sides of the cutting arm make the changing of cutting arm very easy.